

Design proposal

Our greening of the courtyard includes recycling the hexagonal slabs. We want to pile them up and fix with adhesive. This will create an informal series of raised edges (minimum height 150mm), that act as a boundary to the park. The remaining slab path will allow access weaving between the trees and grasses. We propose three small size trees with large grasses and fragrant herbs at the base. Along with a cornflower meadow mix.



Visual outline of the slab piles and grasses

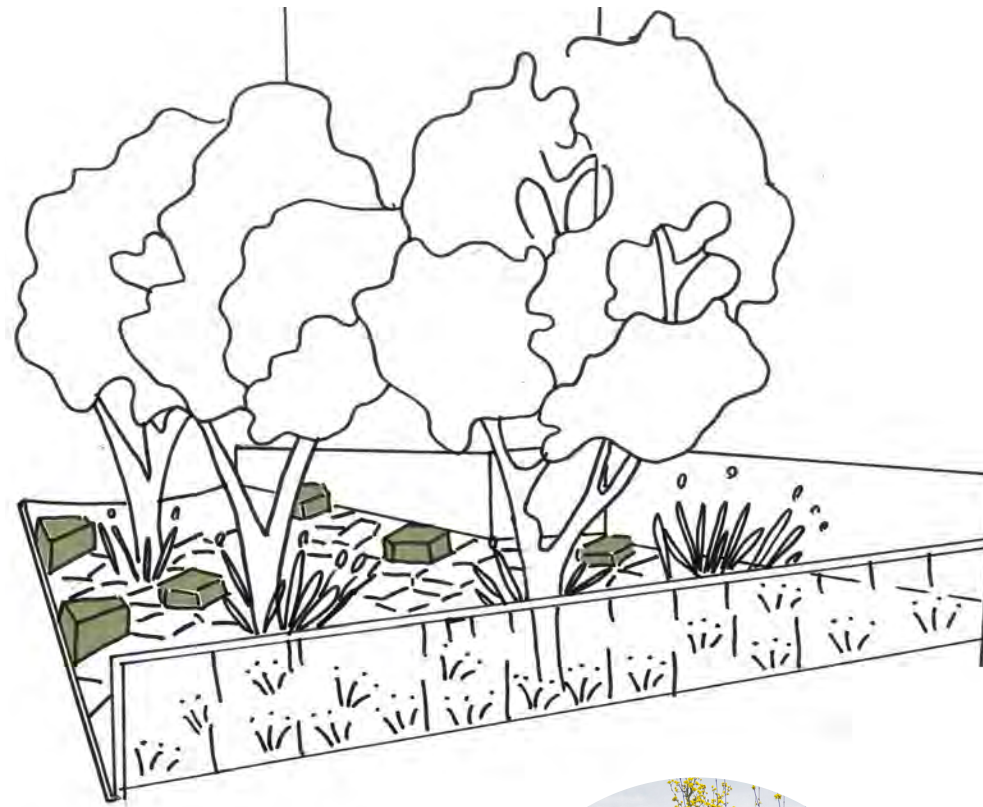
Proposed grass and herb mix:



Deschampsia cespitosa 'Goldschleier' grass



Calamagrostis 'Karl Foerster' grass



Sketch design



Proposed Tree:
Cornus mas/
Cornelian cherry



Stipa gigantea grass

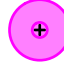


Lavender and grasses mix



Proposed flowers:
Achillea millefolium
and cornflower
meadow mix



Key:
 **New Standards**
 9 total
 min. 5m spacing
 **Depaved areas with understory planting**

UF098 ISLAND GARDENS CHRISTCHURCH COURTYARD




Registered Charity Number: 1032154

Prince Consort Lodge
Kennington Park
Kennington Park Place
London
SE11 4AS

Tel: 0207 840 5954
Email: info@treesforcities.org

Revision:	Notes:	Drawn by:	Checked by:	Date:
A	First issue	GW	GL	17/11/25
B	Plan update	GW	GL	11/01/26
C	Design revision	GW	BB	11/03/26

Project: **UF098 Island Garden**
 Drawing title: **Christchurch Courtyard General Arrangement**

Scale & Sheet size: **1:200 @ A3**


Drawing number: **UF098/02** Rev.C Date: **11/11/2025**

